

### INSTALLATION INSTRUCTIONS

- 1- TEMPORARILY ATTACH BRACKETS TO THE BACKSIDE OF THE DEFLECTOR WITH HARDWARE AS ILLUSTRATED.
- 2- SLIP ON CHROMED TRIM EDGE TO BOTTOM EDGE OF THE HOOD DEFLECTOR AND CUT OFF EXCESS. TRIM DOES NOT GO INTO THE CUTOUT.
- 3- POSITION THE DEFLECTOR ON HOOD. BE SURE THAT THE BOTTOM EDGE OF THE DEFLECTOR IS FLUSH TO THE EDGE OF THE GRILL. NOTE 3
- 4- MARK BRACKET HOLES ON HOOD.

**ATTENTION**

DO NOT MARK SIDE HOLES, IT WILL BE DONE IN A FURTHER STEP.

**CAUTION**

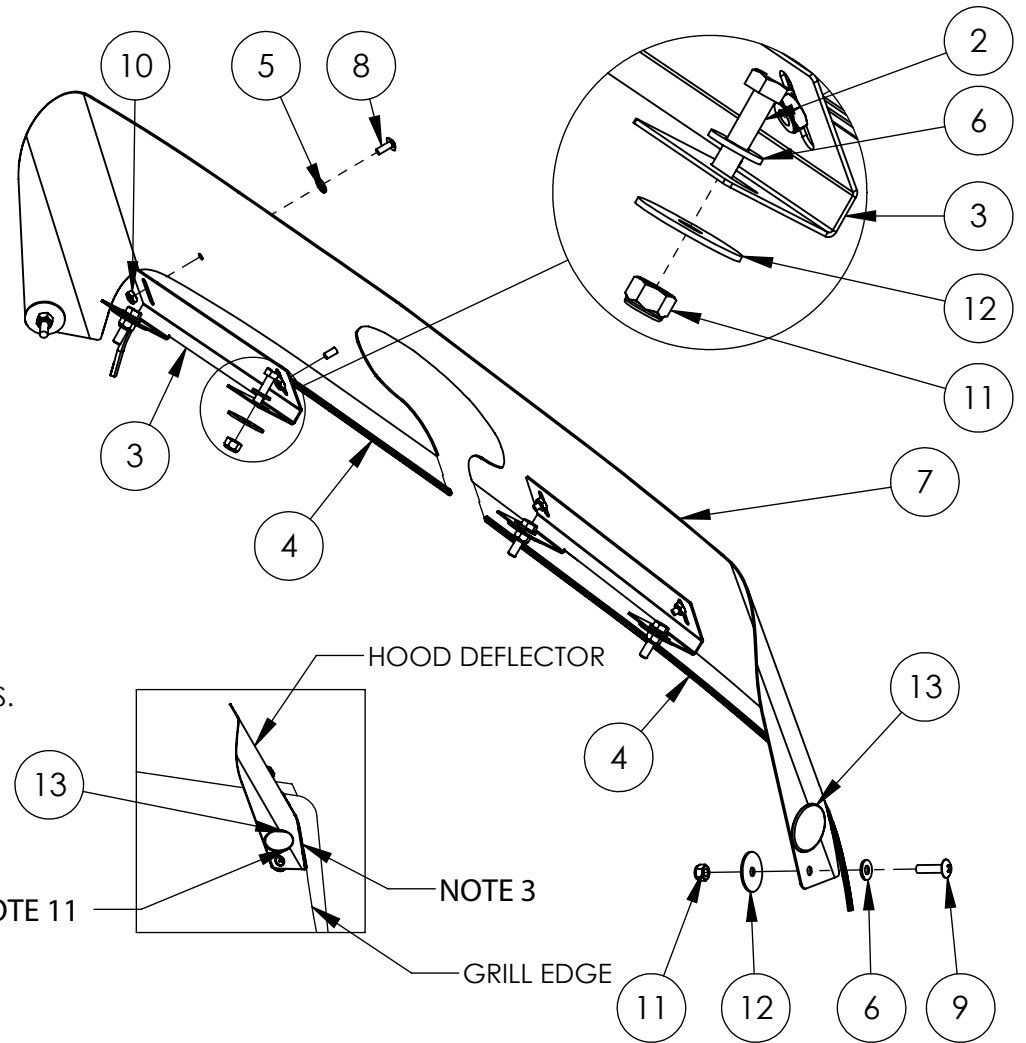
REMOVE THE HOOD DEFLECTOR TO PREVENT DAMAGE

- 5- DRILL HOLES AS MARKED AT 9/32" (.28125") DIA.
- 6- TEMPORARILY INSTALL THE DEFLECTOR AS ILLUSTRATED.
- 7- PRESS SIDE OF THE DEFLECTOR ONTO THE HOOD AND MARK HOLES.

**CAUTION**

REMOVE THE HOOD DEFLECTOR TO PREVENT DAMAGE

- 8- DRILL SIDE HOLES AT 9/32" (.28125") DIA.
- 9- INSTALL THE DEFLECTOR WITH HARDWARE AS ILLUSTRATED.
- 10- TIGHTEN ALL SCREWS AND BOLTS.
- 11- STICK THE BELMOR LOGOS ABOVE THE SIDE SCREWS. NOTE 11



ITEM NO.	PART NO.	DESCRIPTION	QTY
1	M7121007SC	HOOD DEFLECTOR	1
2	K7121006BH	HARDWARE KIT INCLUDE:	-
3	-	PR7421002-U00	2
4	-	ES28-215-P80	1
5	-	FLAT WASHER ID#10 X OD 1/2" SS	4
6	-	FLAT WASHER 1/4" SS	6
7	-	DÉFLECTEUR DE CAPOT	1
8	-	TRUSS PHILIPS #10-32NFX1/2" SS	4
9	-	TRUSS PHILIPS 1/4-20NCX1"SS	2
10	-	NYLON LOCK NUT #10-32NF SS	4
11	-	NYLON LOCK NUT, 1/4-20 UNC	6
12	-	FENDER WASHER 1/4"OD1 1/4"Z	6
13	-	BELMOR LOGO STICKER	2

TRUX ACCESSORIES			
TITLE: HOOD DEFLECTOR PETERBILT 386			
SIZE	DWG. NO.		
<b>A</b>	<b>78162</b>		
NAME	DATE	REV	DATE
DRAWN BY P.W.	23-11-2006	PH1	-
SCALE: 1:8		WEIGHT: LBS	SHEET: 1 OF 1